



DEPARTMENT OF THE ARMY
 THE INSTITUTE OF HERALDRY
 9325 GUNSTON ROAD, ROOM S113
 FORT BELVOIR, VIRGINIA 22060-5579

AAMH-IHS

15 February 2019

MEMORANDUM FOR Senior Army Instructor, Lakeland Senior High School, JROTC,
 726 Hollingsworth Road, Lakeland, FL 33801

SUBJECT: Insignia for Lakeland Senior High School, JROTC

1. In accordance with the approved suggested designs and with the provisions of paragraph 7-12, AR 145-2, the following insignia is authorized for Lakeland Senior High School:

a. Shoulder sleeve insignia (SSI) with description and symbolism as follows:

DESCRIPTION

On a shield shaped embroidered item edged with a 1/8 inch (0.32 cm) orange border, blazoned as follows: Argent, a pile enarched Sable, overall a fouled anchor Tenné. Attached above the item a black scroll ledged with a 1/8 inch (0.32 cm) orange border inscribed “**LAKELAND**” in orange. Overall dimensions are 3 1/2 inches (8.89 cm) in height by 2 7/8 inches (7.3 cm) in width.

SYMBOLISM

The enarched pile resembles the bow of a ship as viewed from the front, alluding to the school’s mascot of the dreadnaught, an unstoppable battleship. The anchor represents a secure foundation for the students to develop their life skills through the academic and JROTC programs. Orange, black, and white are the school colors.

Colors and Cable Numbers

FULL COLOR	CABLE #	UCP	CABLE #	OCP	CABLE #
Orange	67110	Black	67138	Black	67138
Black	67138	Foliage Green	67202	Bagby Green	67204
White	67101	Brown	67136	Olive Drab	67133

b. Shoulder loop insignia (SLI) with description and symbolism as follows:

DESCRIPTION

On a shield shaped gold metal and epoxied device 1 1/8 inches (2.86 cm) in height blazoned as follows: Per fess engrailed in base Tenné and Azure, on a laurel wreath a torch enflamed Or; overall a gore coupé Sable bearing an anchor bendwise of the third. Attached below the shield, a Black scroll bearing the inscription “**NULLI SECUNDUS**” in gold.

AAMH-IHS

SUBJECT: Insignia for Lakeland Senior High School, JROTC

SYMBOLISM

The engrailed partition of the field conveys a warm sky over a cool sea. The couped gore resembles the bow of the dreadnaught, an unstoppable battleship and the mascot of the school. The laurel wreath, surrounding the torch's base, denotes academic honor and achievement. The anchor conveys the nautical theme and conveys stability and strength.

CHIP COLORS

Orange #7

Blue #18

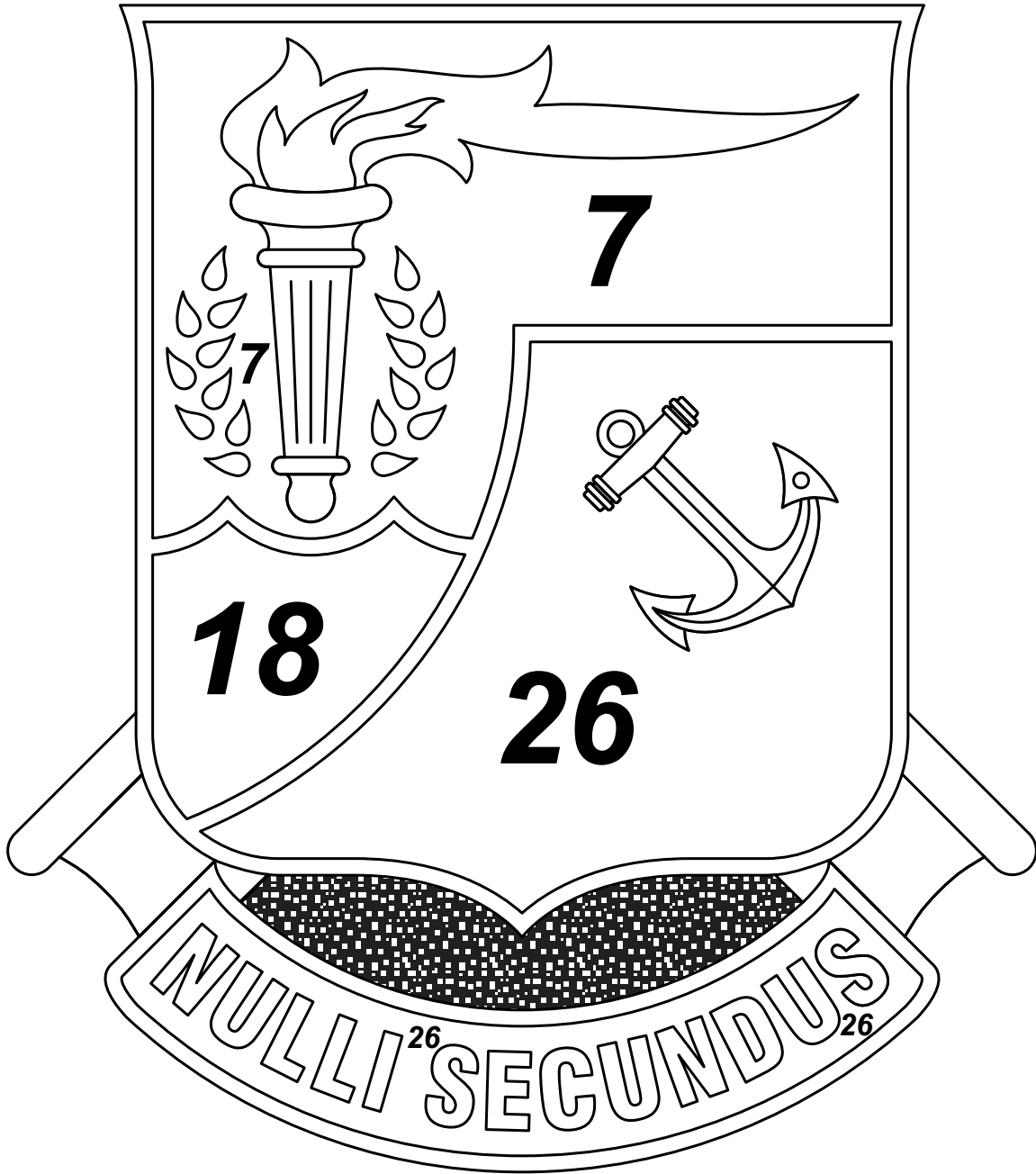
Black #26

3. The following are also enclosed for your use:
 - a. SSI manufacturing drawing (A-10J-1249) with black and white line drawing, universal camouflage pattern and operational camouflage pattern.
 - b. SLI manufacturing drawing, black and white line drawing and color guide.
4. To ensure that insignia is manufactured IAW AR 672-8, please select manufacturers from The Institute of Heraldry's certified list (Encl 3). You will be required to provide one copy of the manufacturing drawing to each manufacturer from whom you are requesting a development bid and production of your insignia.
5. When you are in receipt of your insignia, please forward one color and one subdued sample of the SSI and one sample of the SLI to this Institute for our records.
6. This authorization letter will become a part of this Institute's organizational files for your school. A copy of this letter should also be retained in your school's permanent ROTC files.

Encls

CHARLES V. MUGNO
Director

CF:
U.S. Army Cadet Command,
JROTC Directorate



**LAKELAND SENIOR HIGH SCHOOL
LAKELAND, FLORIDA**

ACTUAL SIZE-----1 3/16" ± 1/64" High (3.02 cm ± 0.04 cm)

METAL COLOR & PLATING-----Gold

FINISH-----Mirror-like polish

DESIGN

CHARGES-----Flush, except details in torch & scroll to be incised.

LETTERING-----Finished metal

PIERCING-----None, area between scroll and shield to be recessed and textured

EPOXY-----Stoning

CHIP No's-----Orange #7, Blue #18, Black #26

APPROVED
THE INSTITUTE OF HERALDRY,
DEPARTMENT OF THE ARMY

CHARLES V. MUGNO
DIRECTOR



**LAKELAND SENIOR HIGH SCHOOL
LAKELAND, FLORIDA**

ACTUAL SIZE-----1 3/16" ± 1/64" High (3.02 cm ± 0.04 cm)

METAL COLOR & PLATING-----Gold

FINISH-----Mirror-like polish

DESIGN

CHARGES-----Flush, except details in torch & scroll to be incised.

LETTERING-----Finished metal

PIERCING-----None, area between scroll and shield to be recessed and textured

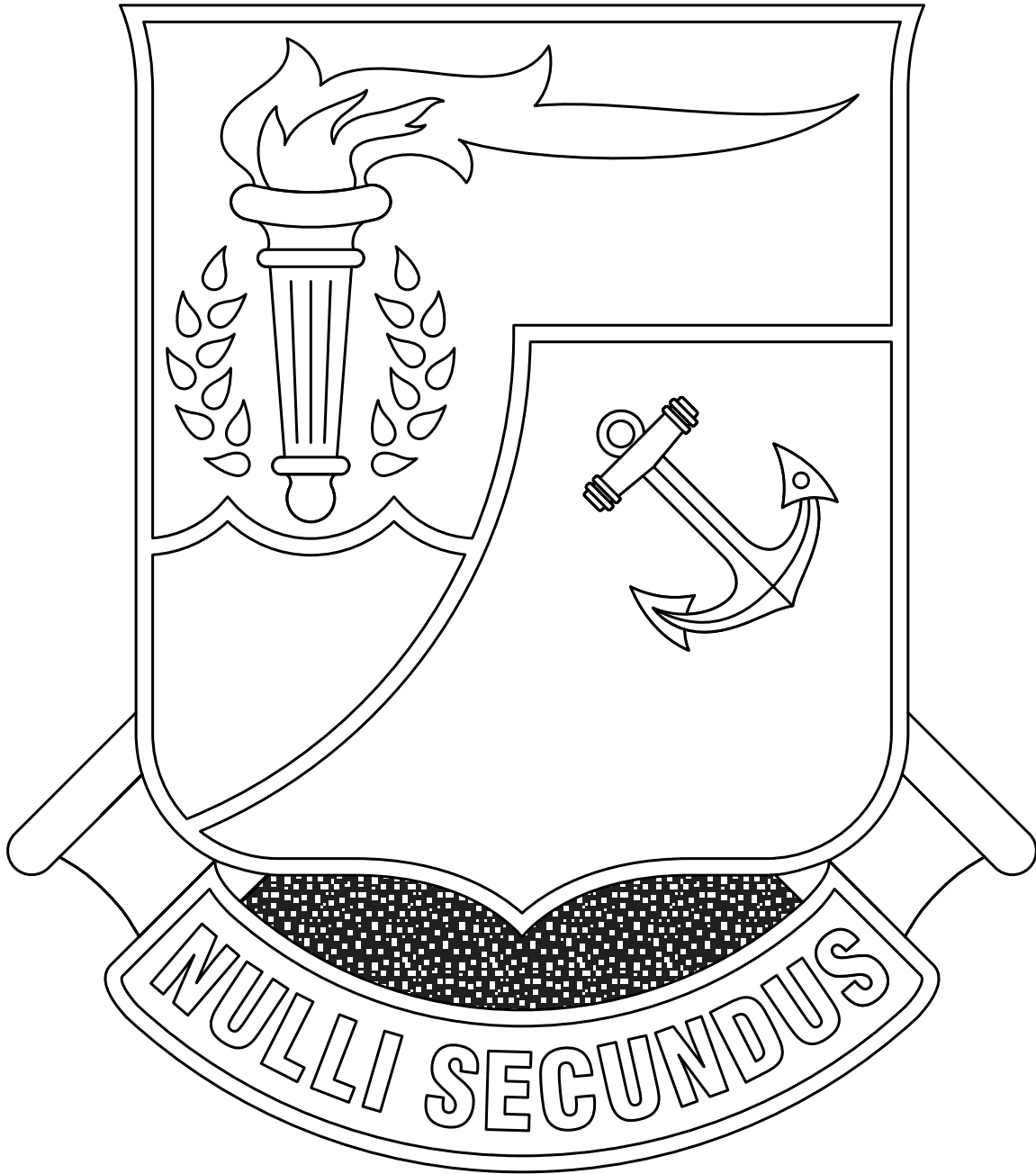
EPOXY-----Stoning

CHIP No's-----Orange #7, Blue #18, Black #26

**FOR COLOR PLACEMENT ONLY
NOT FOR COLOR MATCH**

*APPROVED
THE INSTITUTE OF HERALDRY,
DEPARTMENT OF THE ARMY*

*CHARLES V. MUGNO
DIRECTOR*



**LAKELAND SENIOR HIGH SCHOOL
LAKELAND, FLORIDA**

ACTUAL SIZE-----1 3/16" ± 1/64" High (3.02 cm ± 0.04 cm)

METAL COLOR & PLATING-----Gold
FINISH-----Mirror-like polish

DESIGN
CHARGES-----Flush, except details in torch & scroll to be incised.

LETTERING-----Finished metal
PIERCING-----None, area between scroll and shield to be recessed and textured

EPOXY-----Stoning
CHIP No's-----Orange #7, Blue #18, Black #26

*APPROVED
THE INSTITUTE OF HERALDRY,
DEPARTMENT OF THE ARMY*

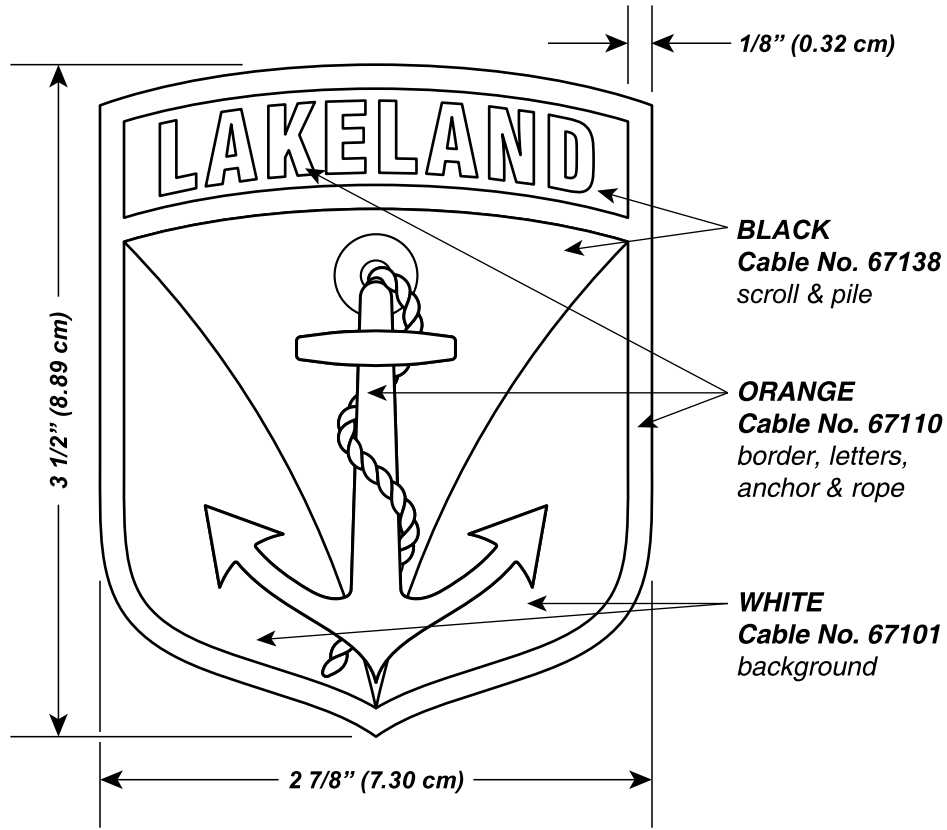
*CHARLES V. MUGNO
DIRECTOR*

FOR SUBDUED INSIGNIA

UCP:
 ORANGE AREAS TO BE BLACK
 67138. BLACK AREAS TO BE
 FOLIAGE GREEN 67202. WHITE
 AREAS TO BE BROWN 67136.

OCP:
 ORANGE AREAS TO BE BLACK
 67138. BLACK AREAS TO BE BAGBY
 GREEN 67204. WHITE AREAS TO BE
 OLIVE DRAB 67133.

REVISIONS



DESIGNED FOR OVEREDGE STITCHING

A	EXAMINED	<i>TLC</i>		THE INSTITUTE OF HERALDRY, DEPARTMENT OF THE ARMY 9325 GUNSTON RD, RM S-113 FORT BELVOIR, VA 22060-5579			
	CHECKED	<i>CA</i>	<i>SAC</i>				
	PREPARED	<i>AW</i>		SHOULDER SLEEVE INSIGNIA LAKELAND SENIOR HIGH SCHOOL LAKELAND, FLORIDA			
	APPROVED	_____ CHARLES V. MUGNO - DIRECTOR					SIZE B
MATERIALS: TO BE MANUFACTURED IN ACCORDANCE WITH MIL-DTL-14652				SCALE	FULL	DATE	08 FEBRUARY 2019

SHOULDER SLEEVE INSIGNIA
LAKELAND SENIOR HIGH SCHOOL, LAKELAND, FLORIDA



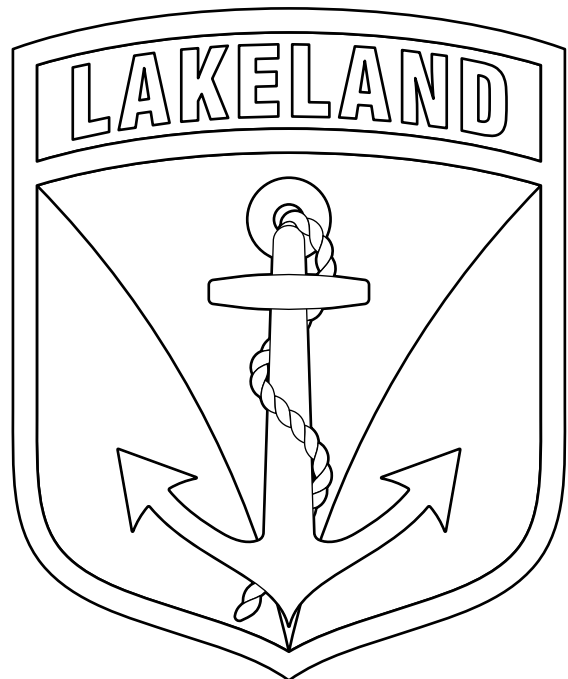
COLOR



ACU-UCP



ACU-OCP



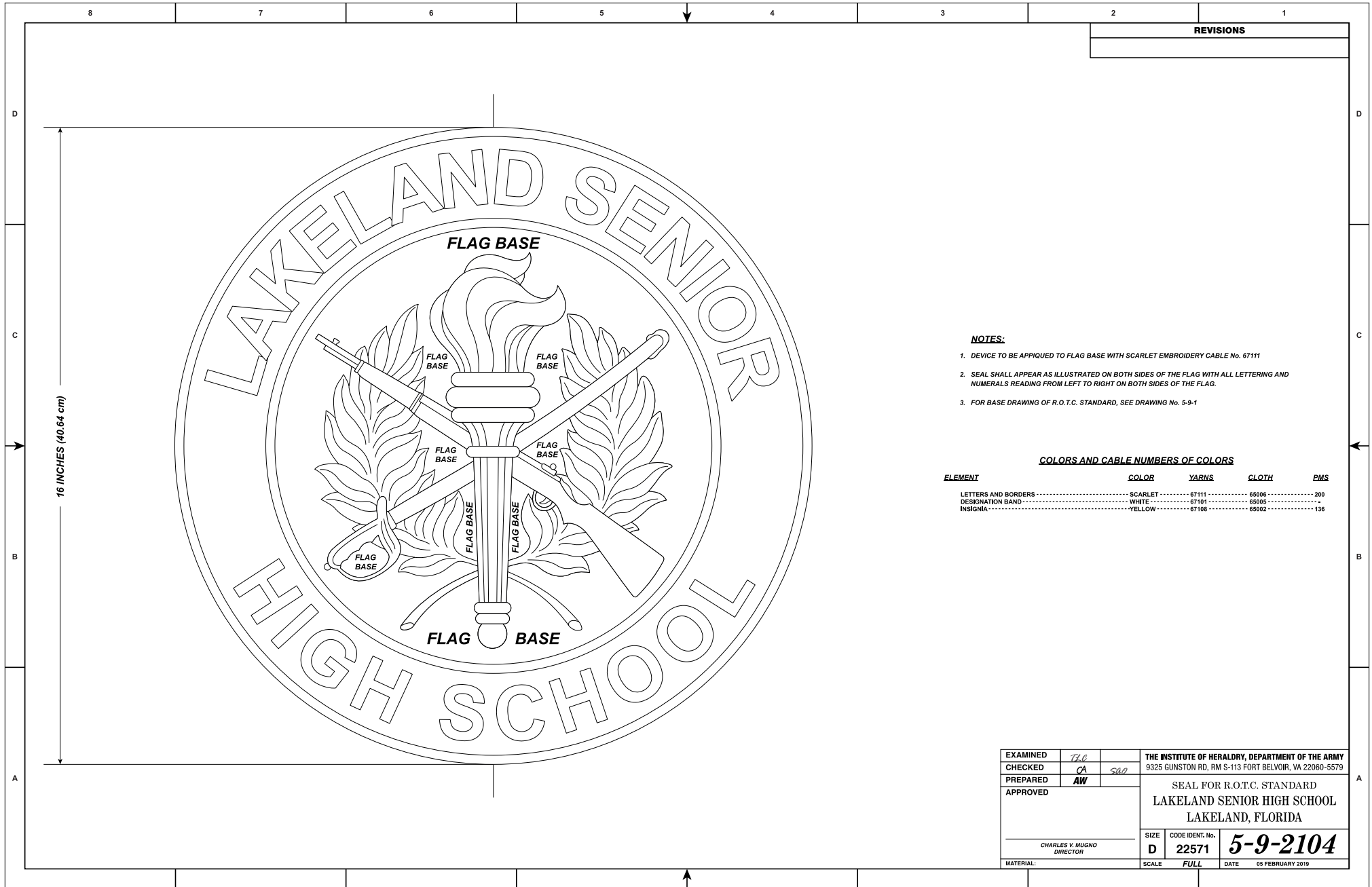
LINE

THE INSTITUTE OF HERALDRY
DEPARTMENT OF THE ARMY
9325 GUNSTON ROAD, ROOM S113
FORT BELVOIR, VIRGINIA 22060-5579



APPROVED

CHARLES V. MUGNO
DIRECTOR



REVISIONS	

NOTES:

1. DEVICE TO BE APPLIED TO FLAG BASE WITH SCARLET EMBROIDERY CABLE No. 67111
2. SEAL SHALL APPEAR AS ILLUSTRATED ON BOTH SIDES OF THE FLAG WITH ALL LETTERING AND NUMERALS READING FROM LEFT TO RIGHT ON BOTH SIDES OF THE FLAG.
3. FOR BASE DRAWING OF R.O.T.C. STANDARD, SEE DRAWING No. 5-9-1

COLORS AND CABLE NUMBERS OF COLORS

ELEMENT	COLOR	YARNS	CLOTH	PMS
LETTERS AND BORDERS	SCARLET	67111	65006	200
DESIGNATION BAND	WHITE	67101	65005	
INSIGNIA	YELLOW	67108	65002	136

EXAMINED	<i>TRC</i>		THE INSTITUTE OF HERALDRY, DEPARTMENT OF THE ARMY 9325 GUNSTON RD, RM S-113 FORT BELVOIR, VA 22060-5579 SEAL FOR R.O.T.C. STANDARD LAKELAND SENIOR HIGH SCHOOL LAKELAND, FLORIDA
CHECKED	<i>CA</i>	<i>SAD</i>	
PREPARED	<i>AW</i>		
APPROVED			
CHARLES V. MUGNO DIRECTOR			SIZE D
MATERIAL:			CODE IDENT. No. 22571
			5-9-2104
			SCALE FULL DATE 05 FEBRUARY 2019